



Biblioteca estense universitaria

Largo S. Agostino 337

I-41121 Modena MO

Tel ++39 + 59 222248

Fax ++39 +59 230195

[b-este@beniculturali.it](mailto:b-este@beniculturali.it)

<http://bibliotecaestense.beniculturali.it>

mus.f.1120

STRADELLA, ALESSANDRO

Mottetto Ave regina coelorum, a sopr., alto e org.

Ms., s.d.

Img: ICCU, 2005

Del. <sup>le</sup>travella Ave Regina A 2. C. A. = Canto.

1120  
(1-7)

ue Re-  
 gina Celo - rum A  
 ue Regina Celo - rum Ave  
 mina Angelorum ave  
 Domina Ave Domina Angelo -  
 rum salve radix sal - ue porta - sal - ue  
 radix sal - ue porta ex qua mundo lux est  
 or - - - - - ta sal - ue radix sal - ue  
 porta sal - ue radix sal - ue por - - - - - ta



Handwritten musical score on ten staves. The lyrics are in Latin and are written in a cursive hand. The music consists of a single melodic line with a treble clef and a key signature of one sharp (F#). The lyrics are: "ex qua mundo lux est or — ta —", "Gaude gaude Virgo gloriosa", "gau — de gau —", "de gaude gau — de gaude Virgo glo —", "riosa glori — osa super", "om — nes spe — ci — osa super super", "omnes specio — sa vate vate", "i valde decora — vate", "va — le — vate vate i valde decora", and "et pro nobis xptum — exo — ra". The score ends with a double bar line and a fermata.

ex qua mundo lux est or — ta —

Gaude gaude Virgo gloriosa

gau — de gau —

de gaude gau — de gaude Virgo glo —

riosa glori — osa super

om — nes spe — ci — osa super super

omnes specio — sa vate vate

i valde decora — vate

va — le — vate vate i valde decora

et pro nobis xptum — exo — ra

et pro nobis et pro nobis et pro  
nobis Christi exora Christi ex-  
va  
et pro nobis et pro  
nobis Christi Christi exo - va  
xptum ex - ora xptum exo -  
va xptum xptum exo - va.


Del Sr. Gradella Ave Regina A. 2. C. A. = Alto (2)

*M*  
*M*

gina Celo - rum A - ue Re -  
A - ue Regina Celo -  
rum Ave Domina ave do -  
mina Ange -  
lo - rum Ave Domina Ave  
Domina Angelo - rum sal - ue  
radix sal - ue porta - sal - ue radix sal -  
- ue porta ex qua mundo lux est or -  
sa sal - ue radix sal - ue porta sal - ue

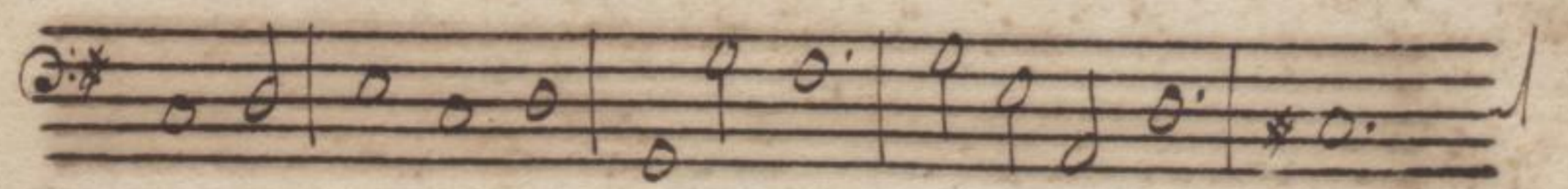
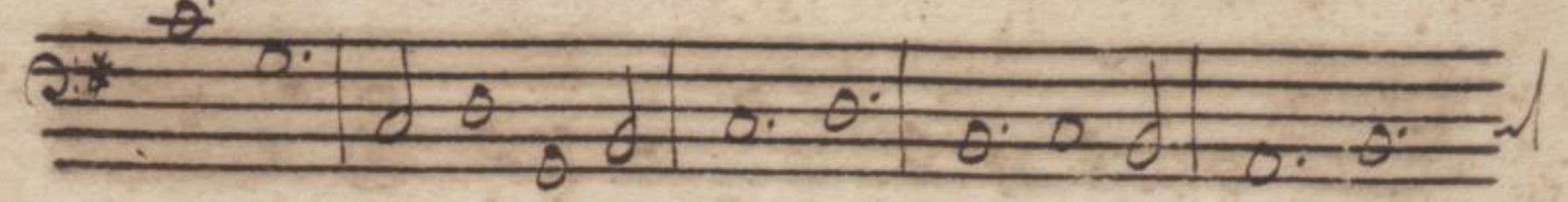

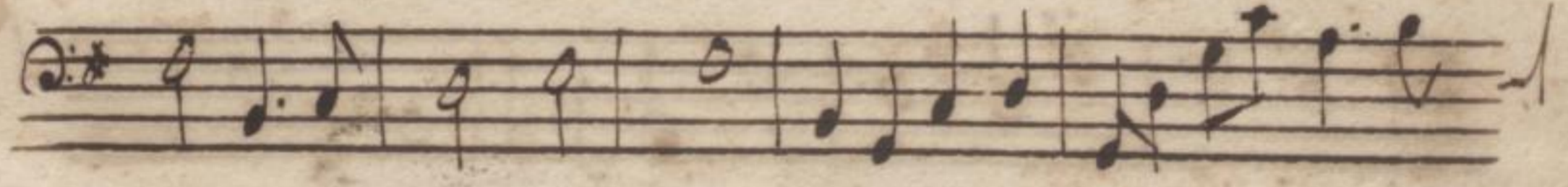
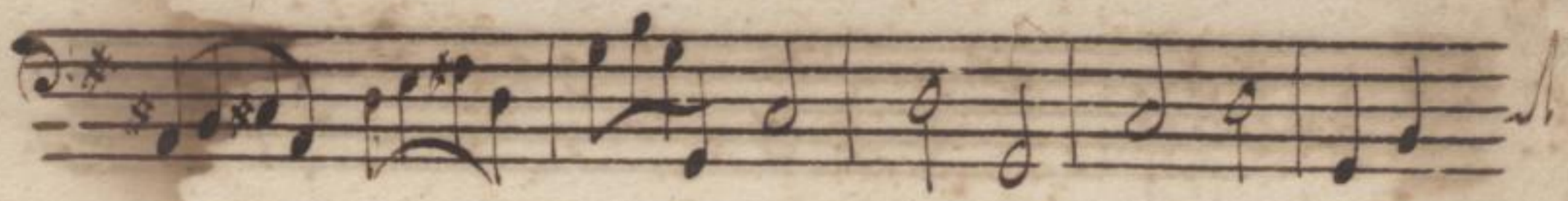
Handwritten musical score on ten staves. The lyrics are in Latin and describe the Virgin Mary as the 'gate of light' and 'superior to all species'. The notation includes various note values, rests, and bar lines. The lyrics are:   
1. *radix sal-ue porta ex qua mundo lux est*  
2. *or - ta est or - ta Gaude*  
3. *gaude Virgo gloriosa - Gau - de*  
4. *gau - de gaude*  
5. *gau - de gaude Virgo - Virgo -*  
6. *glorio - sa super om - nes spe - ci -*  
7. *osa super omnes super*  
8. *omnes omnes spe - ci - osa*  
9. *vale vale o valde decora - vale*  
10. *na - le vale vale o valde de -*

ora et pro nobis xp̄tum exora  
 et pro nobis xp̄tum exo - ra et  
 - pro nobis et pro nobis Chri - stum ex -  
 ora Chri - stum exora et pro  
 nobis et pro nobis xp̄tum exora  
 xp̄tum exora xp̄tum ex -  
 - ra Chri - stum exora xp̄tum xp̄tum ex -  
 - ra xp̄tum xp̄tum exo - ra.

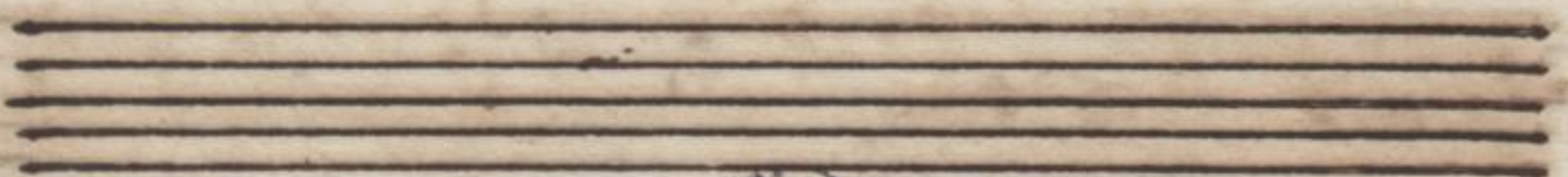
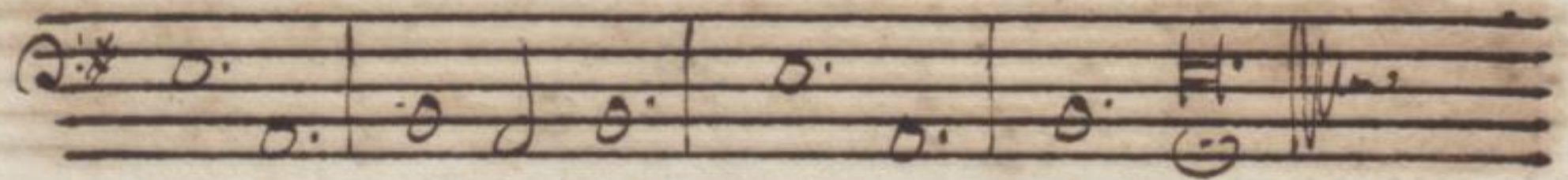
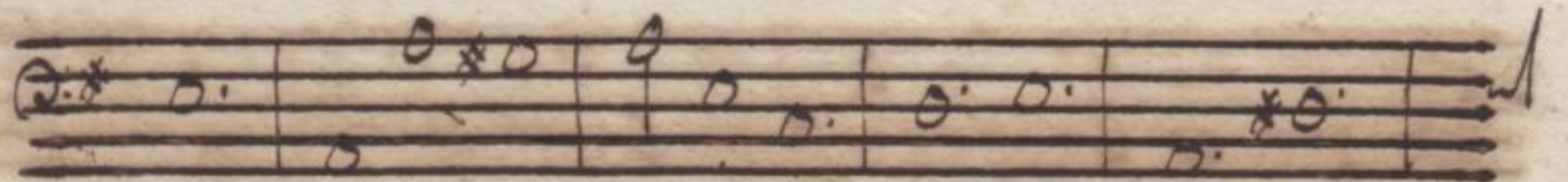
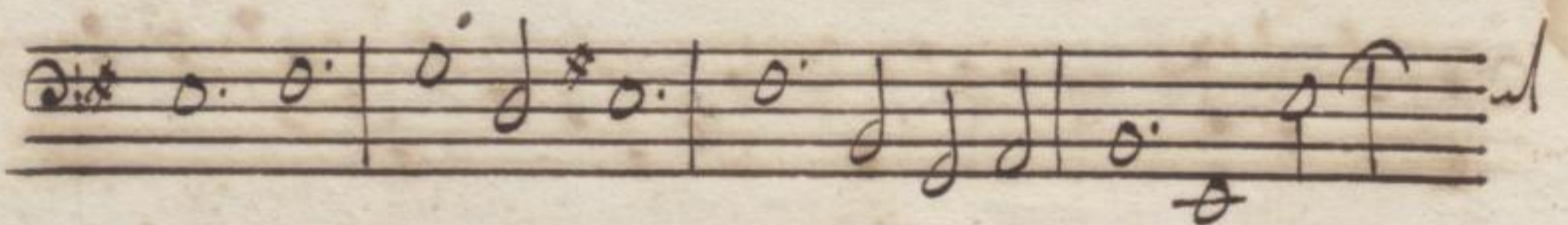
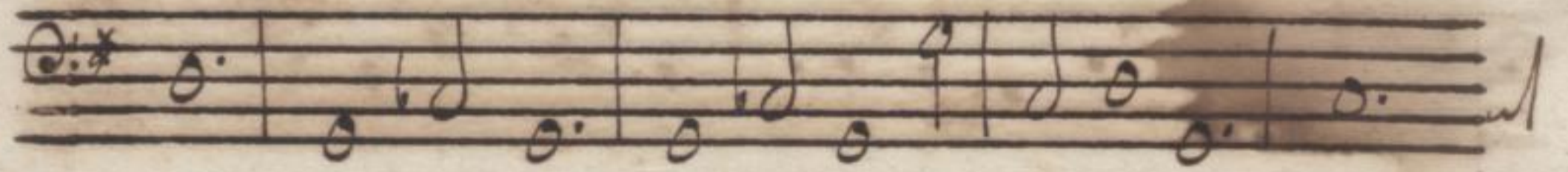
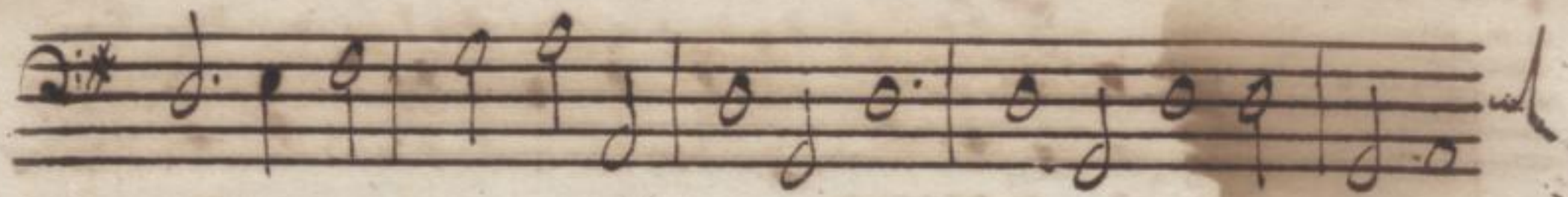
Del S.<sup>to</sup> Stradella Ave Regina <sup>M</sup> A. 2. C. A.  Organo (3)

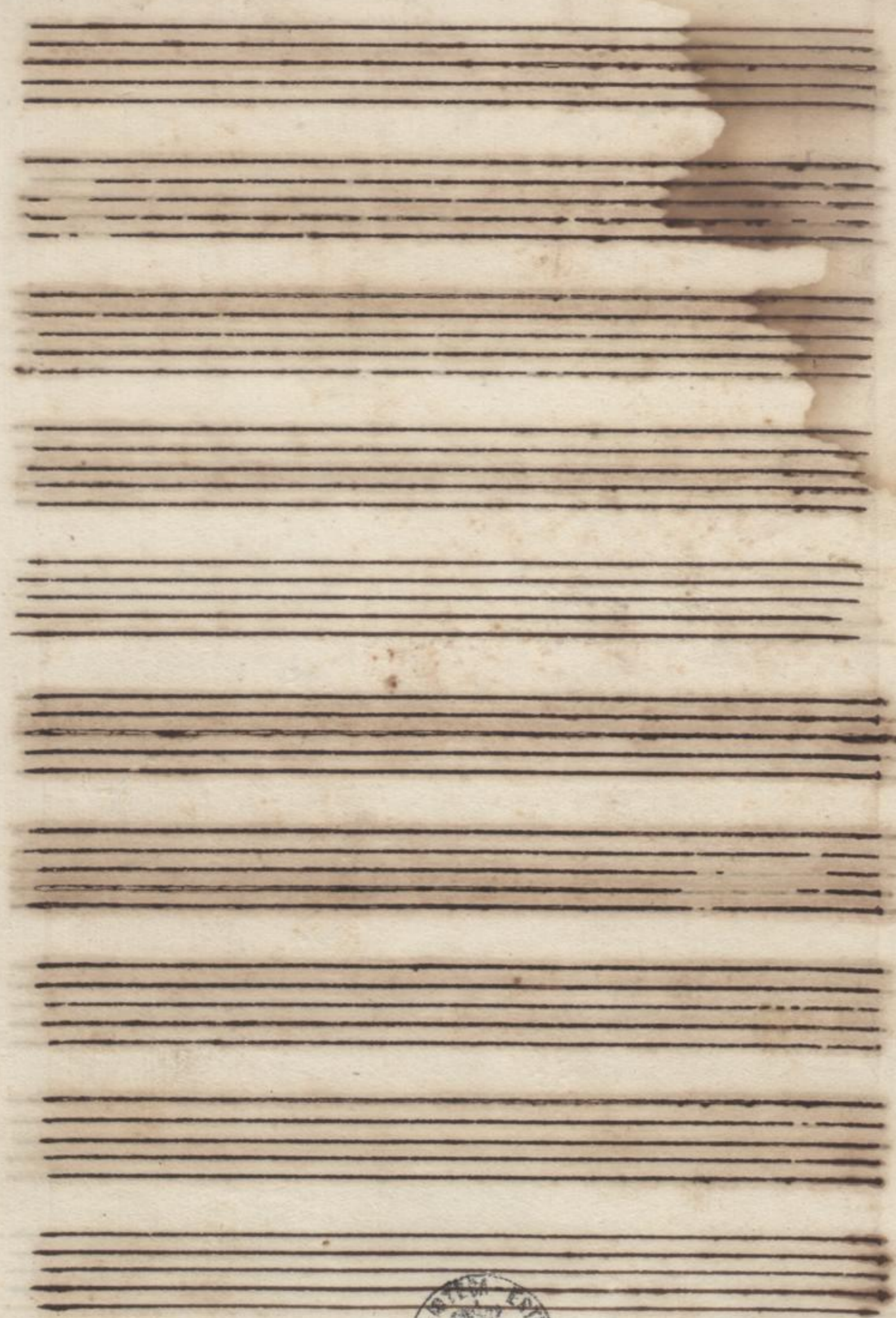
*M* 

*M* Ave Regina 









cc. 6

F. 1120

(1-3) T.

72.



Stracena (rep. v. m. t. c. a. a. m. s.)