

Biblioteca estense universitaria

Largo S. Agostino 337

I-41121 Modena

TEL ++39 +59 222248

FAX ++39 +59 230195

<http://www.cedoc.mo.it/estense/>

mus.c.81

Domenico Galli

Trattenimento musicale sopra il violoncello

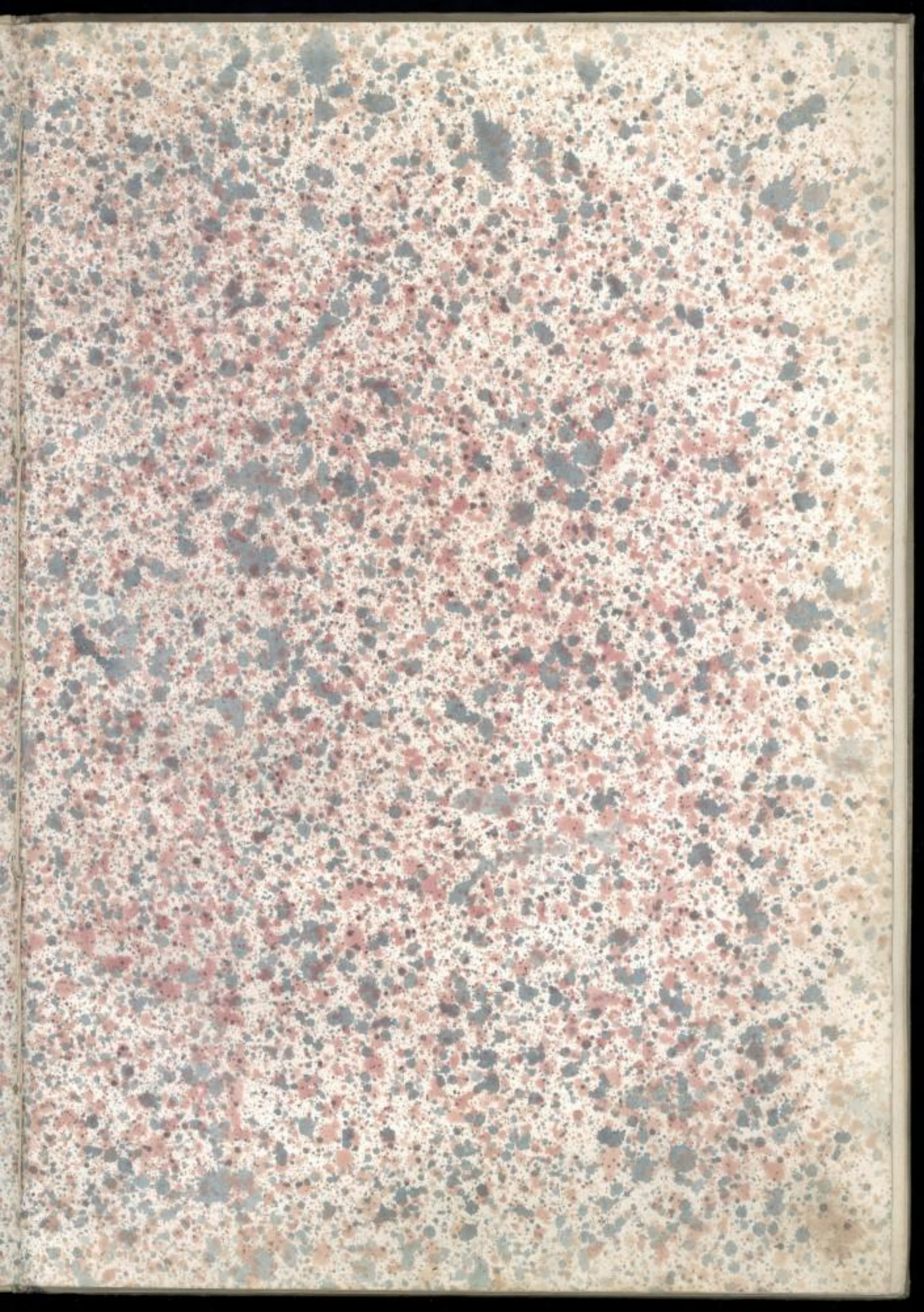
1691





Colle
L. 1000
in the
original
at
Modena
Italy

L. 1000



57.



TRATTENIMENTO
 MUSICALE
 SOPRA IL VIOLONCELLO
 A' Solo, Confecrato
 ALL' ALTEZZA SERENISSIMA DI
 FRANCESCO
 SECONDO
 Duca di Modona, Reggio, &c.
 DA DOMENICO GALLI PARMIGGIANO



48 x 250





Oniapevole questa mia fatica, che appreso le Altezze non compariscono bene le cose basse, ha comandato alla mia povera industria il vestirla con le gesta eroiche d'un Anima grande. Il Violino si presentò con l'impronto d'un Orfeo, insinuando l'amenità soave d'un Governo innocente, goduta da suoi Stati sotto dell'AV. S. se ne viene ora il BASSO marcato con l'Impresa più fatichevole d'un Ercole invitto; perche à bastanza vive persuaso il Mondo, che li Dominanti sono ambidestri, & egualmente con la piacevolezza, e con il rigore, & in Pace, & in Guerra si mostrano

strano

stano incomparabili. Hà il mio genio divoto concepito un Augurio, che il Gran Principe di Galles ben degno Nipote di V.A. debba essere il Figurato, e che se con Ercole, anche in fasce strozzò i Serpi, preservandolo una Provvidenza Onnipotente, dalle sacrileghe tumultuanti rebellion; fatto grande debba alla fine decapitare trionfante l'Idra dell'Anglicana Perfidia; e ben auvalora il concetto à dispetto dell'apparenze in contrario nelle congiunture presenti l'Educazione apprestatagli dalla Sacra Real Maestà di Maria Beatrice Sorella di V.A.S; che qual Pallade generosa, e virtuosissima Eroina v'adestrando il Figlio sotto le spoglie di feroce Leone ad imbrandire il Fulmine potente per atterrar i Tempj, e le Combricole degl'Eretici, e con ardire Erculeo snervar la temeraria superbia degl'Antei anglicani; ne punto parmi da dubitarne riflettendo, che cresce sotto gl'Auspicij, e patrocinio di quell'Eroe, che degnamente porta per Impresa un Sole, mentre in Splendore, Gloria, e Valore si fa conoscere Solo al Mondo; e non per altro hò nobilitato la mia debolezza con simile Geroglifico, che per autenticare il mio Vaticinio obsequioso, e con ciò animare le brame, e le speranze d'un Mondo intiero ansioso di rivedere il Sangve Estense propagatore della Fede in quel Soglio da cui con selegno di tutti i buoni, dall'Empietade fù esclusa. Le annessè poi Sonate dell'Instrumento ogni volta, che hanno fortuna di servire per trattenimento al nobilissimo Genio di V.A.S. gl'attestaranno, che ogni mio povero talento vive ambizioso di nobilitarsi col benignissimo aggradimento.

di V.A.S; la quale con profondissimo inchino umilmente in-
chinando eternamente si protesta ~

Di Vostra Altezza Serenissima ~

Parma li 8. Settembre 1691.

Umilissimo, Devotissimo, & Obligatiss. Servit.
Domenico Galli.

[Faint, illegible text, likely bleed-through from the reverse side of the page]

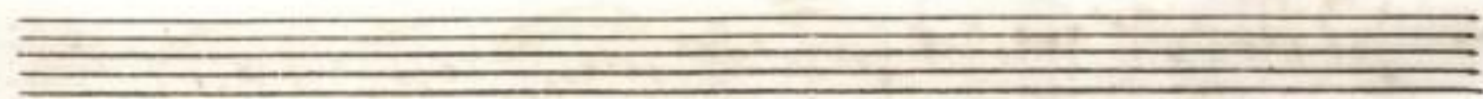
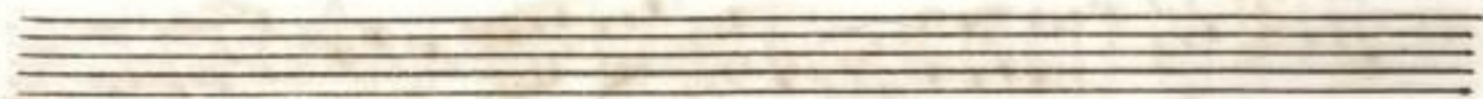
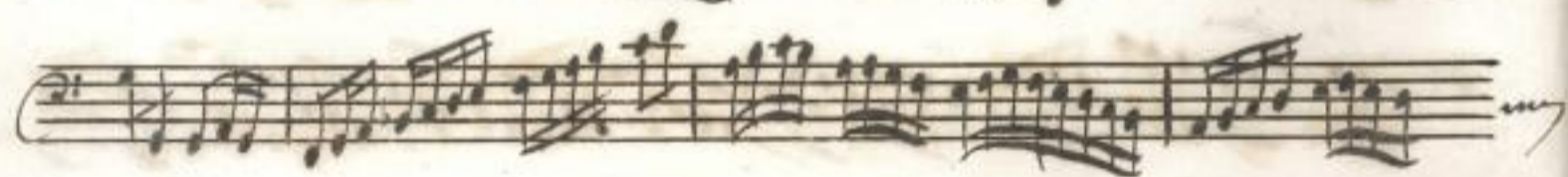
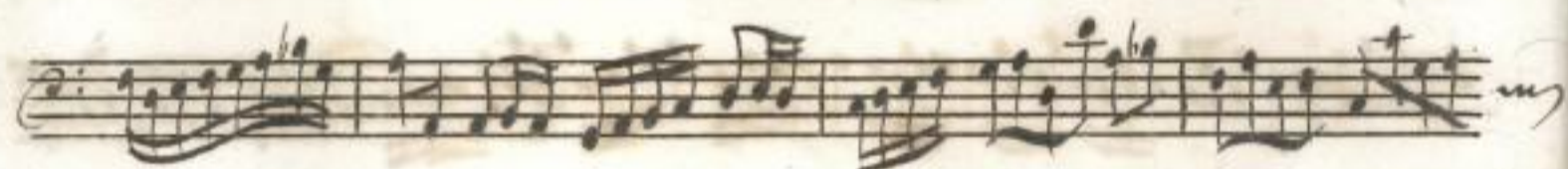
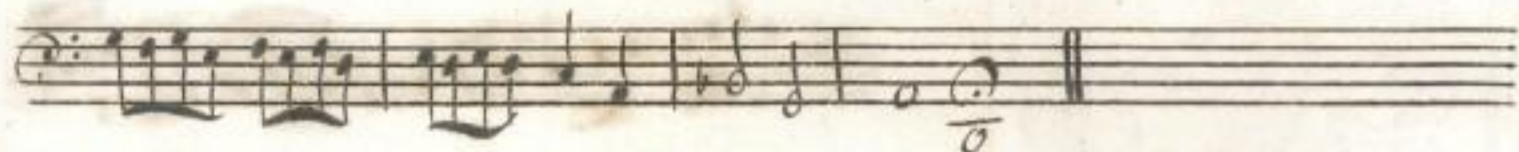
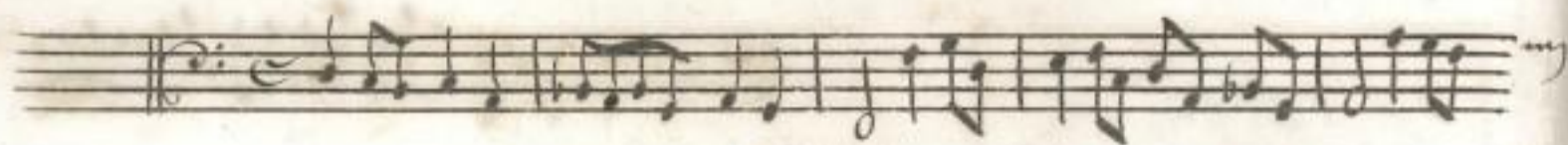


Onata 1.

Handwritten musical notation on four staves. The first staff begins with a treble clef and a common time signature (C). The notation consists of various rhythmic values including eighth and sixteenth notes, often beamed together. The piece concludes with a double bar line and a fermata.

Handwritten musical notation on nine staves. The notation continues with similar rhythmic patterns, including frequent sixteenth-note passages. The piece ends with a double bar line and a fermata on the final note.







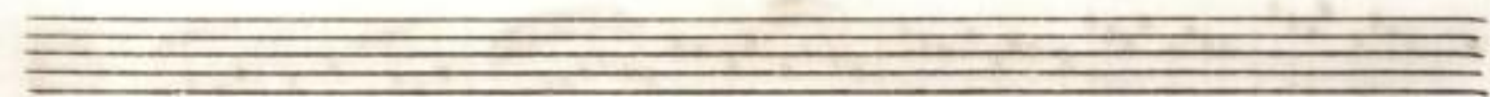
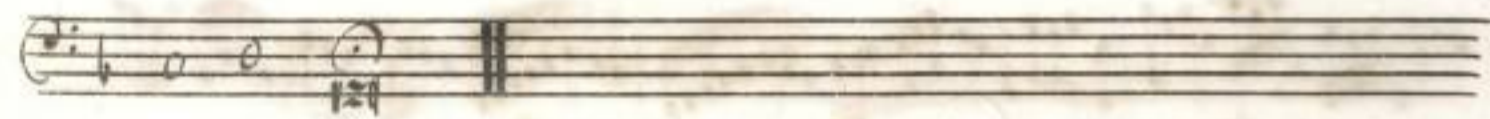
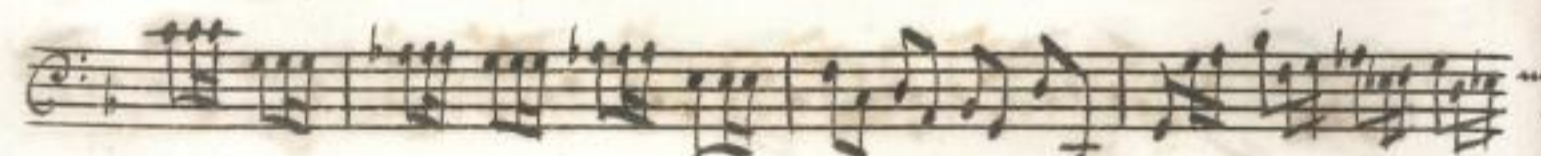
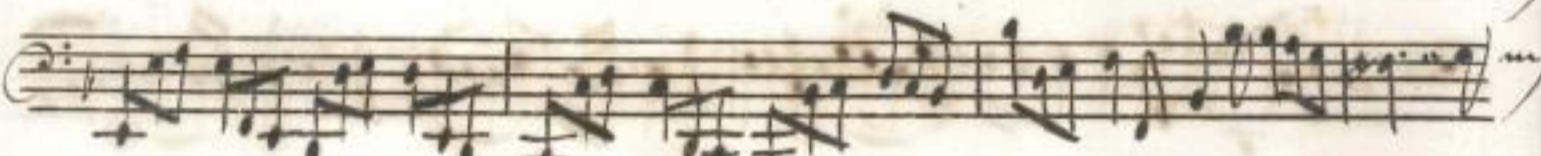
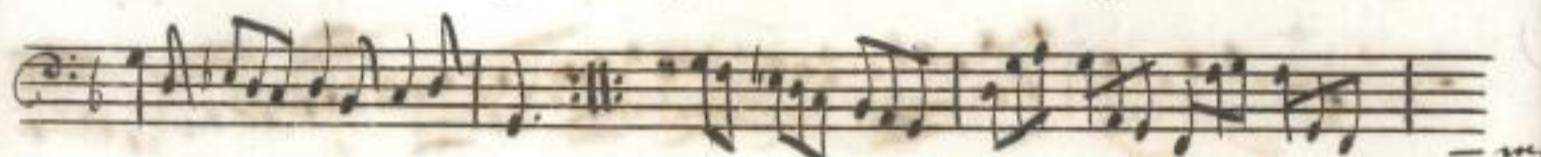
Onata II.

Handwritten musical notation for the first system, consisting of four staves. The notation includes various note values, rests, and clefs. The first staff begins with a treble clef and a common time signature. The second staff begins with a bass clef. The third and fourth staves also begin with bass clefs. The notation is dense and characteristic of 17th or 18th-century manuscript notation.

Handwritten musical notation for the second system, consisting of ten staves. The notation continues from the first system, showing complex rhythmic patterns and melodic lines. The staves are arranged in a single column, with each staff containing a different part of the musical composition. The notation is highly detailed, with many beamed notes and rests.

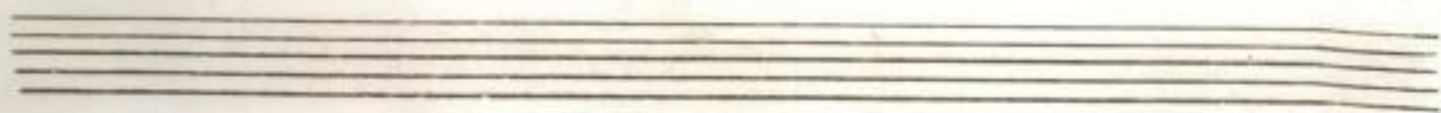
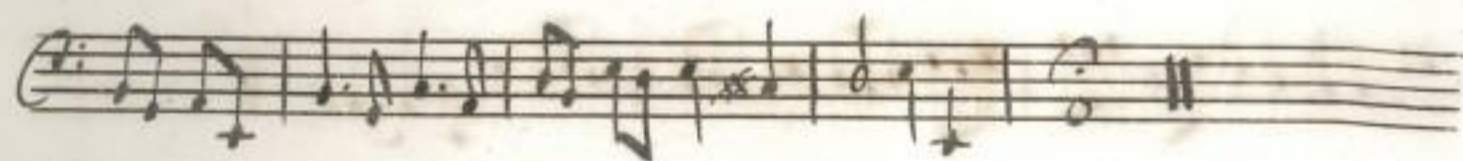


Giga.





Onata III.



This image shows a page of handwritten musical notation on aged, yellowed paper. The score consists of ten staves of music, each with a clef and a key signature. The notation includes various note values, rests, and dynamic markings. The first staff begins with a treble clef and a key signature of one sharp (F#). The second staff has a treble clef and a key signature of one flat (Bb). The third staff has a treble clef and a key signature of one flat (Bb), with the word "poco" written above it. The fourth staff has a treble clef and a key signature of one flat (Bb). The fifth staff has a treble clef and a key signature of one flat (Bb). The sixth staff has a treble clef and a key signature of one flat (Bb), with the word "Giga." written below it. The seventh staff has a treble clef and a key signature of one flat (Bb). The eighth staff has a treble clef and a key signature of one flat (Bb). The ninth staff has a treble clef and a key signature of one flat (Bb). The tenth staff is empty. The paper shows signs of age, including foxing and staining.



Onata iv.

Handwritten musical notation on four staves, corresponding to the title 'Onata iv.'. Each staff begins with a treble clef and a key signature of one sharp (F#). The notation consists of rhythmic patterns of eighth and sixteenth notes, with some rests and accidentals. Each staff ends with a decorative flourish.

Handwritten musical notation on eight staves. The notation continues with rhythmic patterns of eighth and sixteenth notes, including various accidentals and rests. Each staff concludes with a decorative flourish. The paper shows signs of age, including some staining and foxing.

This image shows a page of handwritten musical notation on aged, yellowed paper. The score consists of 12 staves, arranged in two systems of six staves each. The notation is written in black ink and includes various musical symbols such as clefs, time signatures, notes, rests, and bar lines. The first staff begins with a treble clef and a 12/8 time signature. The music is dense and complex, featuring many beamed notes and rests. The paper shows signs of age, including some staining and discoloration. The notation ends with a double bar line and a fermata-like symbol on the final staff.



Onata v.

Aria.

Handwritten musical notation on a single staff, featuring a treble clef, a key signature of one flat (B-flat), and a 12/8 time signature. The notation includes various rhythmic values such as eighth and sixteenth notes, along with some accidentals.

Giga.

Handwritten musical notation on a single staff, continuing the piece with similar rhythmic complexity and notation as the first staff.

Handwritten musical notation on a single staff, showing further development of the musical theme.

Handwritten musical notation on a single staff, ending with a double bar line and repeat dots.

Handwritten musical notation on a single staff, featuring a treble clef and a key signature of one flat.

Handwritten musical notation on a single staff, continuing the melodic and rhythmic patterns.

Handwritten musical notation on a single staff, showing a continuation of the piece.

Handwritten musical notation on a single staff, ending with a double bar line and repeat dots.

Handwritten musical notation on a single staff, featuring a treble clef and a key signature of one flat.

Handwritten musical notation on a single staff, concluding the piece with a final cadence and a 12/8 time signature.

Two empty musical staves at the bottom of the page.

Two empty musical staves at the bottom of the page.



Onata VI.

Musical staff with notes and rests.

Musical staff with notes and rests.

Musical staff with notes and rests.

Musical staff with notes and rests.

Musical staff with notes and rests.

Musical staff with notes and rests.

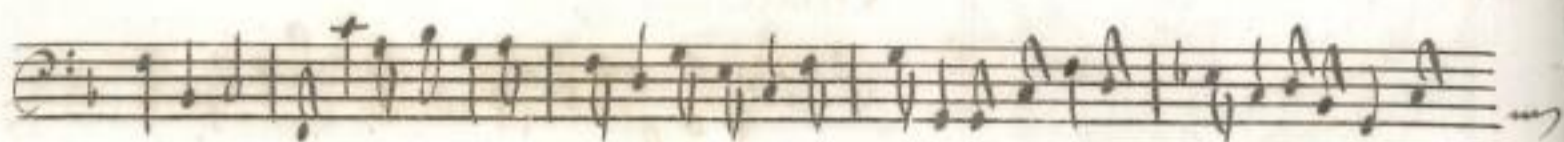
Musical staff with notes and rests.

Musical staff with notes and rests.

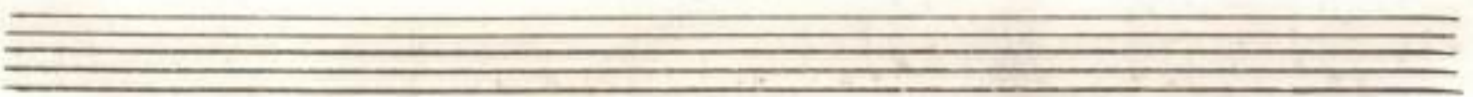
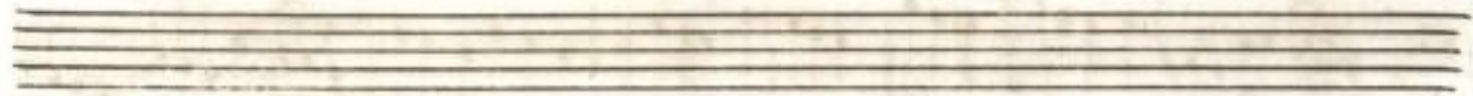
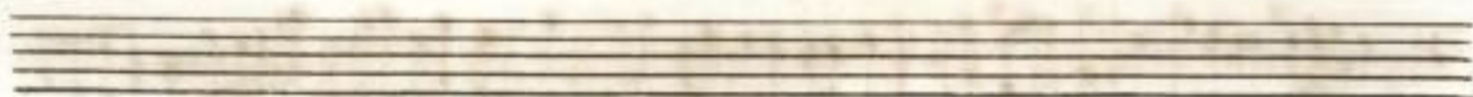
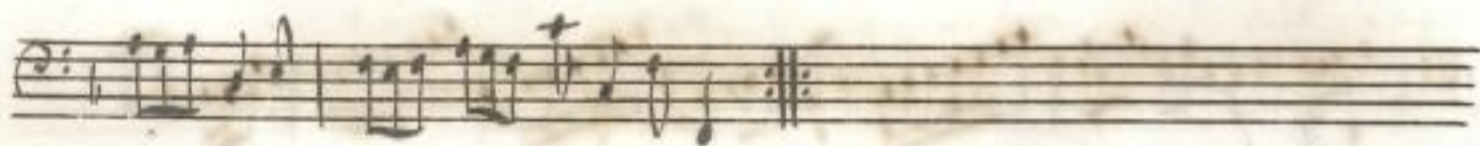
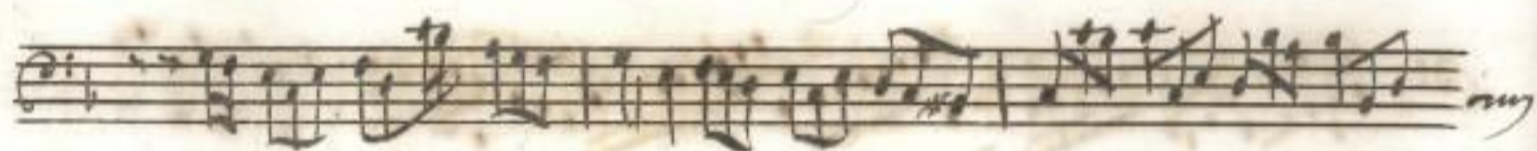
Musical staff with notes and rests.

Musical staff with notes and rests.

Empty musical staves.



Giga.





Onata VII.

Musical staff with notes and a fermata.

Musical staff with notes and a fermata.

Musical staff with notes and a fermata.

Musical staff with notes and a fermata.

Musical staff with notes and a fermata.

Musical staff with notes and a fermata.

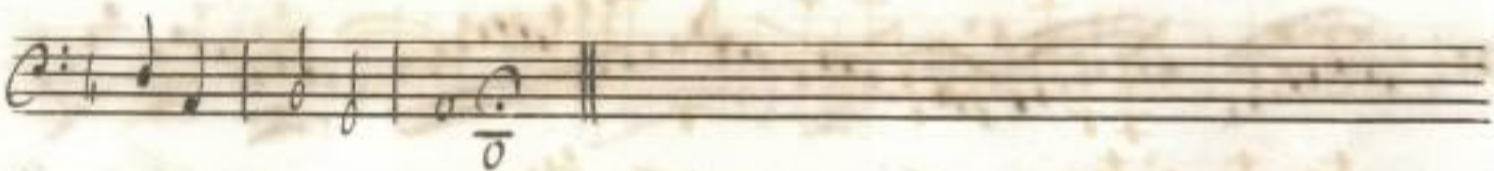
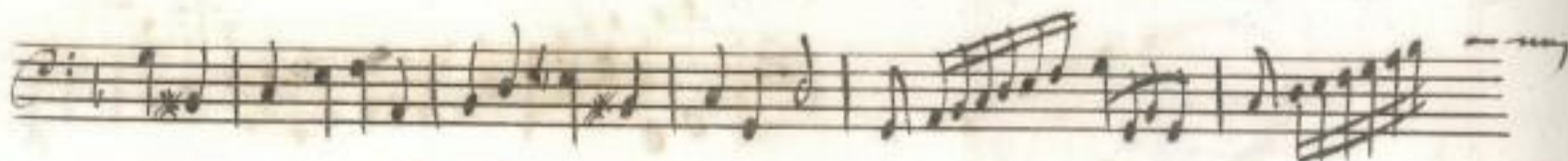
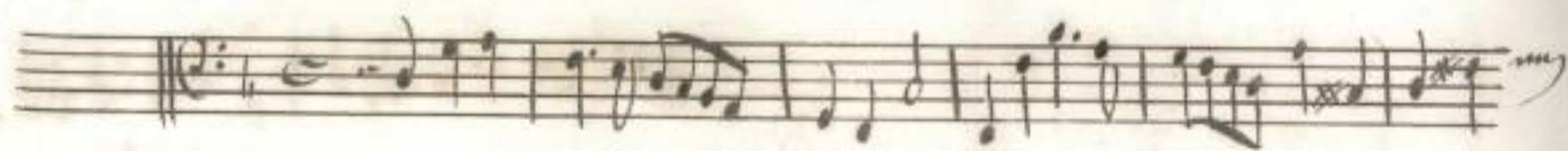
Musical staff with notes and a fermata.

Musical staff with notes and a fermata.

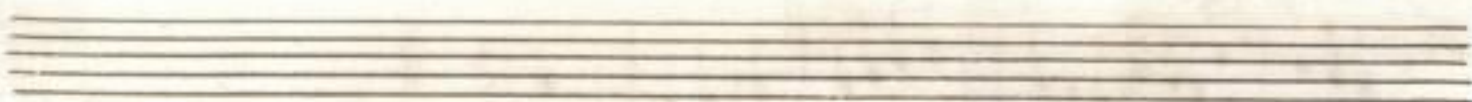
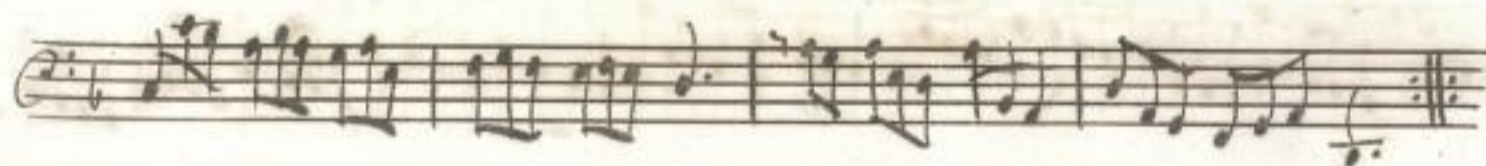
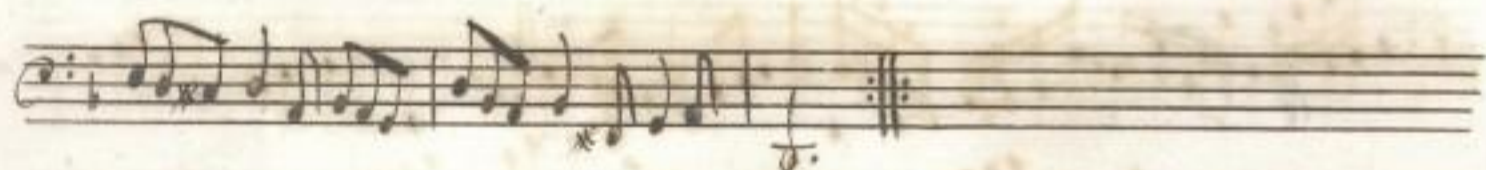
Musical staff with notes and a fermata.

Musical staff with notes and a fermata.

Musical staff with notes and a fermata.



Giga.





Onata VIII.

Handwritten musical notation on four staves, featuring various note values and rests. The notation is in a historical style, possibly from a 16th-century manuscript. Each staff ends with a decorative flourish.

Handwritten musical notation on eight staves, continuing the piece. The notation includes complex rhythmic patterns and rests. The manuscript shows signs of age, with some staining and fading. Each staff ends with a decorative flourish.

A handwritten musical score consisting of ten staves. The notation is in a single system, likely for a multi-measure rest or a specific instrumental part. The first staff begins with a treble clef, a key signature of one sharp (F#), and a 2/4 time signature. The music is written in a style characteristic of 18th or 19th-century manuscript notation, featuring various note values, rests, and accidentals. The notation includes many beamed notes, suggesting a rhythmic pattern. The paper shows signs of age, with some staining and discoloration. The score concludes with a double bar line and repeat dots on the tenth staff.

Three empty musical staves, consisting of three sets of five horizontal lines each, arranged vertically. These staves are completely blank and serve as a placeholder for additional musical notation.



Onata ix.

A handwritten musical score for a piece titled "Giga." The score is written on twelve staves. The first staff begins with a treble clef, a key signature of one sharp (F#), and a common time signature (C). The tempo marking "Giga." is written below the first staff. The music is characterized by rapid sixteenth-note passages and complex rhythmic patterns. The notation includes various note values, rests, and dynamic markings such as "p" (piano) and "f" (forte). The piece concludes with a double bar line and a final cadence on the twelfth staff. The paper shows signs of age, including some staining and discoloration.



Onata x.

Musical staff with notes and a fermata.

Musical staff with notes and a fermata.

Musical staff with notes and a fermata.

Musical staff with notes and a fermata.

Musical staff with notes and a fermata.

Musical staff with notes and a fermata.

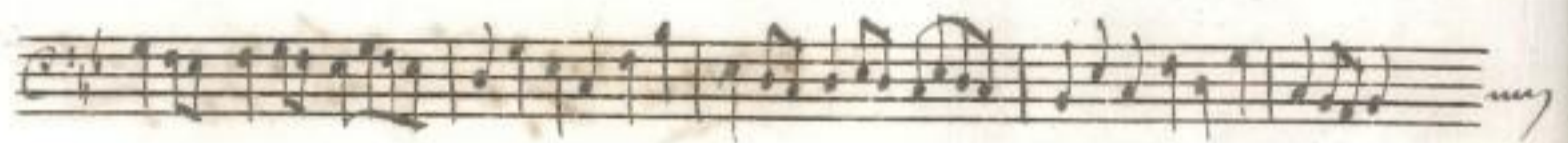
Musical staff with notes and a fermata.

Musical staff with notes and a fermata.

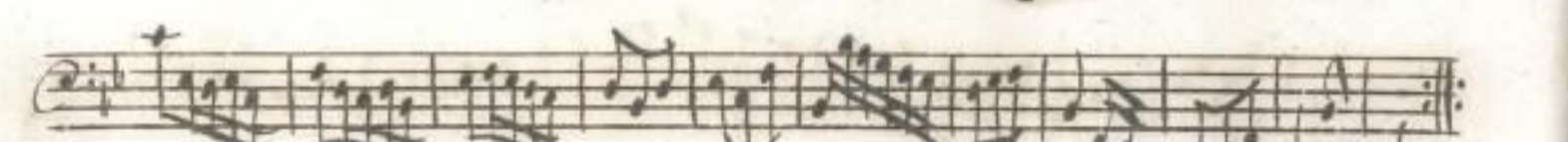
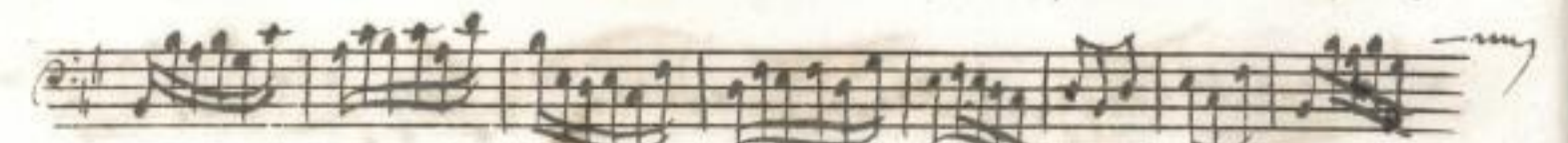
Musical staff with notes and a fermata.

Musical staff with notes and a fermata.

Musical staff with notes and a fermata.



Giga .





Onata xi.

Handwritten musical notation on four staves. The first staff begins with a treble clef and a common time signature (C). The notation includes various note values, rests, and bar lines. The second staff continues the melody. The third staff shows a different rhythmic pattern. The fourth staff concludes with a double bar line and a fermata-like flourish.

A series of ten staves of handwritten musical notation. Each staff contains a line of music with notes, rests, and bar lines. The notation is dense and characteristic of early modern manuscript notation. The staves are arranged vertically, with some staves showing more complex rhythmic patterns and others showing simpler melodic lines. The paper shows signs of age, including some staining and discoloration.

A page of handwritten musical notation on aged paper, featuring 12 staves. The notation is written in a cursive style with various note values, rests, and dynamic markings. The first staff begins with a treble clef and a common time signature. Dynamic markings 'p.' and 'f.' are used throughout the score. The music concludes with a double bar line and repeat signs on the eleventh staff, followed by a final empty staff at the bottom of the page.



Onata XII.

Handwritten musical notation on four staves. The first staff begins with a treble clef and a key signature of one flat. The notation consists of a series of eighth and sixteenth notes, with some beams connecting them. Each staff ends with a decorative flourish.

Handwritten musical notation on seven staves. The notation continues with similar rhythmic patterns of eighth and sixteenth notes. The staves are densely filled with notes and beams, showing a complex melodic line. Each staff concludes with a flourish.

Handwritten musical notation on two staves. The first staff contains a few notes followed by a double bar line. The second staff is empty, consisting of five horizontal lines.

A handwritten musical score consisting of 12 staves of music. The notation is in a single system, with each staff containing a line of music. The music is written in a style characteristic of the 18th or 19th century, featuring various note values, rests, and bar lines. The paper shows signs of age, including foxing and staining. The word "Giga." is written in the left margin between the third and fourth staves. The score concludes with a double bar line and repeat dots at the end of the twelfth staff.

Giga.





